

Introduction

Congratulations on purchasing the KODAK PalmPix Camera, the camera that takes pictures using a PALM III, IIIe, IIIx, IIIc and VII CONNECTED ORGANIZERS (Palm), and IBM WORKPAD and TRGpro personal data assistants (PDAs). With the camera you can:

- Take great looking pictures in two different resolutions. Select a 640 x 480 picture resolution for printing and e-mail; select a 320 x 240 picture resolution for viewing online, or when you need extra space for picture-taking.
- Get close to the subject with a 2X digital zoom.
- Transfer pictures by HotSync Technology for instant editing, printing, and placement into documents.
- Save pictures to a laptop or desktop computer as a JPEG (JPG) or Bitmap (BMP) format.
- E-mail pictures in minutes to business associates, friends, and family anywhere in the world.
- Beam pictures to other Palm users. For details, refer to the guides that came with the Palm.

About the Software

Four applications are included on the Kodak CD supplied with the camera.

- **KODAK PalmPix Software**—runs on the Palm and controls the camera and picture transfer functions.
- **KODAK PalmPix Conduit Software**—provides the capability to perform a HotSync operation for transferring pictures from the Palm to the computer.
- **Presto! Mr. Photo** (NewSoft, Inc.)—lets you edit, enhance, e-mail, print, and organize pictures. For help, refer to the online manual or the NewSoft, Inc. Website at www.newsoftinc.com.
- **Image Carousel** (Rhode Island Soft Systems, Inc.)—lets you create scrolling screen savers and wallpapers for the computer. For help, refer to the online help or the Rhode Island Soft Systems, Inc. website at www.risoftsystems.com.

Loading the Software

1. Exit all software programs.
2. Place the CD into the CD-ROM drive.
3. Follow the on-screen instructions to install the software.
4. After the software is loaded on the computer, perform a HotSync operation to transfer the PalmPix software onto the Palm.

Customizing the Transfer Conduit

The KODAK PalmPix Conduit default settings are set when you install the software, but can be changed using the Advanced window of the HotSync Manager. You can:

- Save pictures in a JPEG (default) or BMP format.
- Specify folders for transferring and saving pictures. **A default folder with the same name as your Palm user name, and a subfolder named PalmPix are automatically created in the Palm data directory on the {C:} drive.**
- Select options for deleting pictures from the Palm after transfer. The default is No.

1. Right click the HotSync Manager icon, then select Custom.
2. Select PalmPix, then click Change to display the Change HotSync Action window.

Note: For information about this window, refer to the guides that came with the Palm.

3. Click Advanced to display the Advanced window. Select the options you want, then click Done.

Preparing the Camera

Loading Batteries

1. Open the battery door (not shown).
2. Insert two AAA batteries into the chamber as shown.
3. Close the battery door.



Checking Batteries

A battery status symbol appears on the Palm when previewing a picture (page 6). A black battery symbol means batteries are charged; a partially black symbol means batteries are weak; and a blinking symbol indicates batteries are exhausted and need to be replaced.

Connecting the Camera

When connected, the camera lens faces the back of the Palm.



1. Align the Palm connector and the camera connector.
2. Push the camera and Palm together until they lock in place.

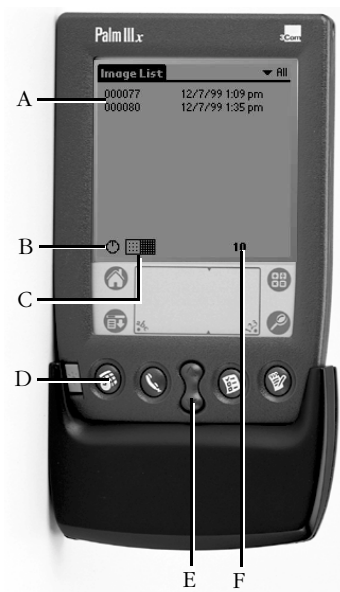
To remove the camera, pull it away from the Palm.



Using the PalmPix Software

With the camera connected, turn on the Palm, tap the Applications button, then tap the PalmPix icon to display the main PalmPix window.

- A. **Picture File Name**—name given to pictures stored on the Palm. Pictures can be renamed, deleted, and categorized using the Details window (page 7).
- B. **Self-Timer**—tap the icon to create a ten-second delay.
- C. **Resolution**—tap the icon to select 320 x 240  or 640 x 480  picture resolution.
- D. **Preview/Shutter Button**—press the Date Book button once to preview the image, then press it again to take the picture.
- E. **Zoom Button**—press the Scroll button up to zoom in, or down to zoom out on the image. Zoom is available only in 640 x 480 resolution.
- F. **Frame Counter**—displays the number of pictures that can be stored on the Palm.



Taking Pictures

With the camera connected to the Palm, picture-taking is controlled by the PalmPix Software. When PalmPix is activated, the Date Book button becomes the camera Preview/Shutter button.

1. Press the Date Book button once to view the subject.

The Palm screen displays a live preview. To cancel the preview, tap the screen.

Note: Because of image processing time, color PDAs preview the image in grayscale.



2. Press the Date Book button a second time to take the picture.

Note: If the Self-Timer is activated, the Palm beeps for ten seconds, then beeps faster just before the picture is taken.

A progress bar appears below the picture displaying the transfer status of the picture to the Palm. To cancel the transfer, tap the trash can icon.

Viewing, Renaming, and Deleting Pictures

Viewing Pictures

Tap the file name to view the picture. The picture appears with the file name, and the date and time when the picture was taken. Press the Scroll button to navigate through the pictures.

Note: Pictures beamed between non-color and color PDAs appear as grayscale images on the color PDA.

Renaming Pictures

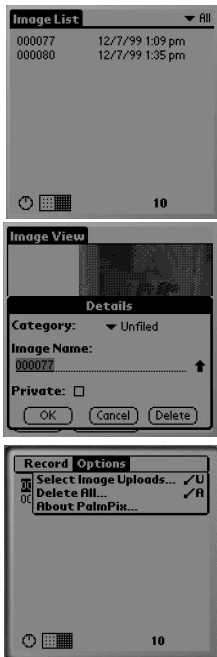
With the picture displayed, tap Details to display the Details window and rename the file. In the Details window, you can categorize, delete, and mark the file as private. For more information, refer to the guides that came with the Palm.

Deleting Pictures

To delete a selected picture—tap the file name to be deleted, then tap Menu->Record->Delete Image.

To delete all pictures—tap Menu->Options->Delete All.

Note: You cannot access Options->Delete All when a picture is displayed.



Transferring Pictures to a Computer

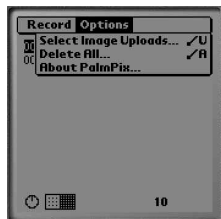
1. Tap Menu->Options->Select Image Uploads.

Note: You cannot access Options->Select Image Uploads when a picture is displayed.

2. Highlight the file name and tap the single arrow button to add the picture, or tap the double arrow button to add all the pictures to be transferred to the Upload List.

To remove pictures from the Upload List, highlight the file name and tap Remove, or tap Remove All to remove all the pictures.

3. Place the Palm in the cradle, then press the HotSync Manager button to transfer the images from the Palm to the PalmPix folder on your computer.



General Maintenance, Safety, and Tips

- To keep from damaging your camera, avoid exposing it to moisture and extreme temperatures.
- Clean the outside of the camera by wiping with a clean, dry cloth. Never use harsh or abrasive cleaners or organic solvents on the camera or any of its parts.
- Do not allow any chemicals, such as suntan lotion to come into contact with the surface of the camera.
- Never disassemble or touch the inside of the camera.
- Wipe the lens gently with a soft, lint-free cloth or an untreated lens-cleaning tissue.
- If pictures appear too dark when viewing on a computer, increase the available light source when taking pictures.

Using Your Batteries

- Kodak recommends KODAK PHOTOLIFE AAA Alkaline Batteries, or KODAK AAA Ni-MH Rechargeable Batteries.
- Remove the batteries when the camera is stored for extended periods of time.
- Always follow your battery manufacturer's directions fully. Do not attempt to disassemble, short circuit, or subject the battery to high temperature or fire.

- Replace all batteries of a set at the same time. New batteries should not be mixed with used ones. Do not mix rechargeable and nonrechargeable batteries. Do not mix alkaline or Ni-MH types of batteries. Do not mix different grades or brands of batteries. Failure to observe this precaution may result in some batteries in a set being driven beyond their normal exhaust point and increase their possibility of leakage.
- If you elect to use alkaline batteries in your camera, you will obtain better performance from “photo-flash grade” alkaline batteries, such as KODAK PHOTOLIFE alkaline batteries. These types of batteries last more than twice as long in digital cameras as ordinary alkaline batteries. Alkaline batteries are not rechargeable, do not attempt to recharge them in a charger.
- When using the camera, we recommend limiting continuous Preview or Review to less than 10-minutes per session.
- When disposing of batteries, follow the manufacturer’s instructions and all federal, state, and local regulations. Kodak suggests customers take advantage of any community battery recycling programs that may exist in your area. Contact your local waste remover or recycler for details.

Specifications

VGA Resolution	High	640 x 480=307,200 pixels
	Low	320 x 240=76,800 pixels
Color		24-bit, millions of colors
Picture File Format		BMP, JPEG
Lens	Aperture	F/2.0
	Zoom	2X digital zoom
	Focal Length	6.1 mm
	Focus Distance	36 in. (0.9 m) to infinity
Shutter Speed		1/15-1/500 seconds
Power		2 AAA-size, 1.5-volt alkaline, or 2 AAA-size, 1.2-volt Ni-MH rechargeable
Dimensions (w x d x h)		2.2 x 1.1 x 3.3 in. (55.9 x 28.0 x 83.8 mm)
Weight		0.1 lb. (45 g) without batteries
Operating Temperature		40 to 104° F (4.4 to 40° C)

Design and specifications are subject to change without notice.

Customer Support

- **Web**—www.kodak.com/go/palmpix.
- **U.S. and Canada**—call toll free, 1-888-375-6325, between 9:00 a.m. and 8:00 p.m. (Eastern Standard Time) Monday through Friday.
- **Europe**—call toll free the number associated with your location, or the U.K. toll line, 44-0-131-458-6714, between 09.00 and 17.00 (GMT/CET) Monday through Friday.
- **Outside the U.S., Canada, and Europe**—call the number on the following pages that is associated with your location.

Country	Help Number	Fax
Argentina	54-1-808-300	54-1-808-3328
Australia	1-800-674-831	61-3-9353-2092
Austria	0179-567-357	44-0-131-458-6962
Belgium	02-713-14-45	44-0-131-458-6962
Brazil	0-800-15-0000	55-12-331-8571
Caribbean	78-7-757-5500	78-7-757-8760
Chile	56-2-697-2000	56-2-697-0310
China—Shanghai	8621-64720888	8621-64726582
China—Beijing	8610-63471155	8610-63475641
Colombia	57-1-629-0266	57-1-629-0673
Denmark	3-848-71-30	44-0-131-458-6962

Country	Help Number	Fax
Dominican Republic	809-563-1252	809-563-1264
Egypt	20-2-394-2205	20-2-393-1119
Eire	01-407-3054	44-0-131-458-6962
France	01-55-1740-77	44-0-131-458-6962
Finland	0800-117056	44-0-131-458-6962
Germany	069-5007-0035	44-0-131-458-6962
Greece	00800-44125605	44-0-131-458-6962
Hong Kong	852-2564-9777	852-2564-9753
Hungary	36-1-269-71-17	36-1-269-71-13
India	91-22-617-5823	91-22-617-6004
Ireland	1-800-409391	44-0-131-458-6962
Italy	02-696-334-52	44-0-131-458-6962
Japan	81-3-5488-2390	81-3-5488-4512
Korea	82-2-708-5400	82-2-708-5500
Latin America	1-305-267-4700	1-305-267-4780
Lebanon	961-1-883822	961-1-881726
Malaysia	60-3-757-2722	60-3-755-5919
Mexico	52-5-449-4300	52-5-449-4400
Middle East	971-4-444-910	971-4-447-059
Netherlands	020-346-9372	44-0-131-458-6962
New Zealand	0800-500-135	64-9-302-8637
Norway	23-16-21-33	44-0-131-458-6962

Country	Help Number	Fax
Panama	52-3-678-6200	52-3-678-6210
Peru	51-1-224-8610	51-1-224-8605
Philippines	63-2-810-0331	63-2-816-6718
Portugal	351-1-4149-500	351-14194-321
Russia	7-095-929-9166	7-095-929-9170
Singapore	65-470-9875	65-479-8397
South Africa	27-11-804-2852	27-11-804-5013
Spain	91-749-76-53	44-0-131-458-6962
Sweden	08-587-704-21	44-0-131-458-6962
Switzerland	01-838-53-51	44-0-131-458-6962
Taiwan	886-2-893-8210	886-2-895-1069
Thailand	66-2-271-3040	66-2-279-5073
Turkey	90-216-342-3332	90-216-343-6743
U.K.	0870-2430270	44-0-131-458-6962
Uruguay	59-2-92-0473	59-2-92-1796
Venezuela	58-2-903-1111	58-2-943-2081

Full One Year Warranty

Kodak warrants this product against any defects that are due to faulty workmanship or material for a one-year period after the original date of purchase. During that one-year period, Kodak will replace this product without charge if defective in material or workmanship. To obtain warranty service, please contact Kodak support at the telephone numbers provided in your user's manual. Proof of date of purchase is required to obtain service under the warranty. You may return the product registration card, within 30 days of purchase, to place proof of the date of purchase on file. Failure to return the card will not affect your rights under this warranty.

THIS WARRANTY DOES NOT APPLY WHEN FAILURE IS DUE TO SHIPPING DAMAGE, ACCIDENT, ALTERATION, MODIFICATION, UNAUTHORIZED SERVICE, MISUSE, ABUSE, USE WITH INCOMPATIBLE ACCESSORIES OR ATTACHMENTS, FAILURE TO FOLLOW KODAK'S OPERATION, MAINTENANCE OR REPACKING INSTRUCTIONS, OR FAILURE TO USE ITEMS SUPPLIED BY KODAK (SUCH AS ADAPTERS AND CABLES).

Liability for any special, consequential or incidental damages, (including but not limited to loss of revenue or profit, downtime costs, loss of use of the equipment, cost of substitute equipment, facilities or services, or claims of your customers for such damages resulting from the purchase, use or failure of the product), regardless of cause or for breach of any written or implied warranty is expressly disclaimed and excluded here from.

Some localities do not allow limitations on how long an implied warranty lasts, nor the exclusion or limitation of incidental or consequential damages, so the above limitation or exclusion may not apply to you. This warranty gives you specific legal rights, you may also have other rights.

Warranty Repair Coverage

This warranty will be honored within the geographical location that the product was purchased.

If the equipment does not function properly during the warranty period due to defects in either materials or workmanship, Kodak will, at its option, either repair or replace the equipment without charge, subject to the conditions and limitations stated herein. Such repair service will include all labor as well as any necessary adjustments and/or replacement parts.

If replacement parts are used in making repairs, these parts may be remanufactured, or may contain remanufactured materials. If it is necessary to replace the entire system, it may be replaced with a remanufactured system. Kodak will also provide telephone assistance during the warranty period.

How to Obtain Service

Visit us on the Internet at <http://www.kodak.com>.

When returning a camera for repair, pack the camera in its original packaging materials. A problem report should also be enclosed with the equipment. If the original packaging has been discarded or is not available, packaging will be at the owner's expense.

Unless a specific Kodak warranty is communicated to the purchaser in writing by a Kodak company, no other warranty or liability exists beyond the information contained above, even though defect, damage or loss may be caused by negligence or other act.

To obtain warranty repair service contact your local Kodak representative.

Regulatory Information

FCC Compliance and Advisory

This device complies with Part 15 of the FCC Rules. Operation is subject to the following two conditions: 1) this device may not cause harmful interference, and 2) this device must accept any interference received, including interference that may cause undesired operation.

This equipment has been tested and found to comply with the limits for a Class B digital device, pursuant to Part 15 of the FCC Rules. These limits are designed to provide reasonable protection against harmful interference in a residential installation.

This equipment generates, uses, and can radiate radio frequency energy and, if not installed or used in accordance with the instructions, may cause harmful interference to radio communications. However, there is no guarantee that interference will not occur in a particular installation.

If this equipment does cause harmful interference to radio or television reception, which can be determined by turning the equipment off and on, the user is encouraged to try to correct the interference by one or more of the following measures: 1) reorient or relocate the receiving antenna; 2) increase the separation between the equipment and the receiver; 3) connect the equipment to an outlet on a circuit different from that to which the receiver is connected; 4) consult the dealer or an experienced radio/TV technician for additional suggestions.

Any changes or modifications not expressly approved by the party responsible for compliance could void the user's authority to operate the equipment. Where shielded interface cables have been provided with the product or specified additional components or accessories elsewhere defined to be used with the installation of the product, they must be used in order to ensure compliance with FCC regulation.



FOR HOME OR OFFICE USE. Tested to comply with FCC standard.

Canadian DOC Statement

DOC Class B Compliance—This digital apparatus does not exceed the Class B limits for radio noise emissions from digital apparatus set out in the radio interference regulations of the Canadian Department of Communications.

Observation des normes-Class B—Le présent appareil numérique n'émet pas de bruits radioélectriques dépassant les limites applicables aux appareils numériques de la Classe B prescrites dans les règlements sur le brouillage radioélectrique édictés par le Ministère des Communications du Canada.